



ECONOMIC
PROFITABLE
VERSATILE

Vic Store's Innovative Modular Private Consultation Rooms



Create a new professional consultation room in a few hours at a low cost

Expand Services & Benefits

The New S-PACE Consultation Room

CREATE VALUE BASED ON YOUR PATIENT'S NEEDS





Whether you simply want to create an intimate consultation room to engage with your patient, complete a questionnaire, or establish a more elaborate examination room, the **S-PACE** is your cost effective solution. It prevents you from engaging in costly and time consuming renovations. Vic Store can help you create your new customized **S-PACE** quickly and at low cost without affecting your existing building structure.

Our prefabricated and reconfigurable structure will adapt to your available space and can easily be relocated.

1 Define your needs

Define your needs with our experts to adapt the structure accordingly. Configure your area and incorporate your electrical, plumbing and storage requirements. Vic Store has a turnkey solution for your personalized **S-PACE**.

2 Create your own **S-PACE**

With our self-supporting structure and prefabricated components based on your needs and existing space, create a new **S-PACE** at a low cost. In a few hours, you can have a flexible and customized consultation environment. No lost business hours and no dust and noise disruption. The end result is an attractive and ergonomic **S-PACE**.

3 Brand your **S-PACE**

Every wall element is fully customizable to adapt to your branding and interior design: wall colors and textures, various window and door designs, integrated lighting, graphic signs and TV supports. There is no limit to the look and feel of your **S-PACE**.

4 Begin consulting with your patients

Easily expand your line of service offer to your patients and increase your bottom line. This self standing structure allows you to adapt to your business needs. It can be relocated, dismantled, upgraded and transformed to suit your needs at a competitive price.

1 Define your needs

Define your available space and your patients' needs and Vic Store will create your customized and branded consultation environment. Select within a wide range of custom options for wall colors and textures, windows and doors, integrated graphics and media, and much more. You can even complete your interior design with our RxZone2 furniture and storage products.



Small consultation room and counter



Larger consultation room with double counter



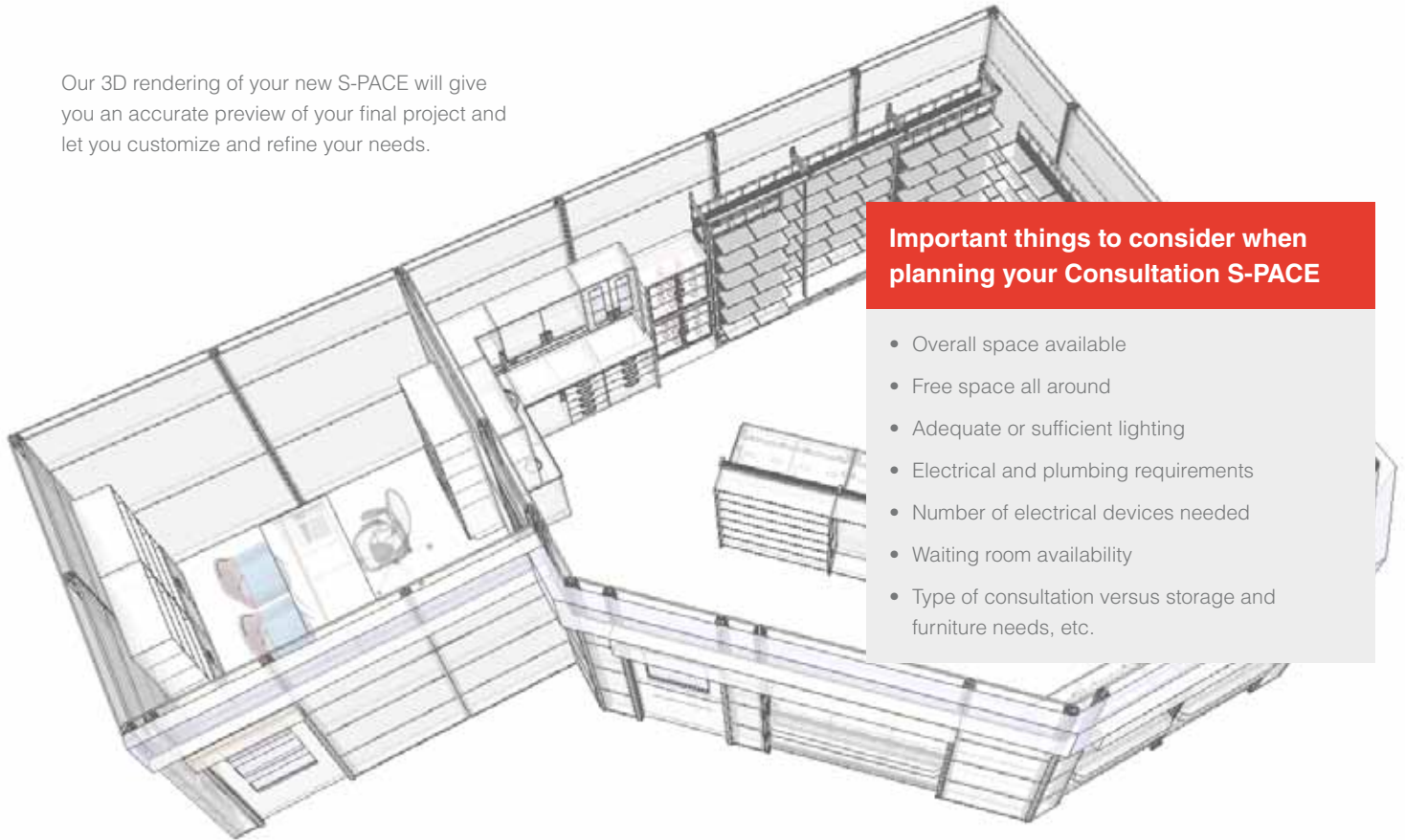
Pharmacy counter, waiting room and multiple consultation rooms

2 Create your own S-PACE

The new S-PACE is a prefabricated self-supporting structure that looks professional and offers privacy. Its aluminum structure is designed to let electrical wires and plumbing components run into the walls allowing for a modern and elegant look.

In a few hours, you can have a flexible and custom consultation environment ready. No lost business hours, no dust and noisy disruption. The end result is a beautiful and ergonomic **S-PACE**.

Our 3D rendering of your new S-PACE will give you an accurate preview of your final project and let you customize and refine your needs.



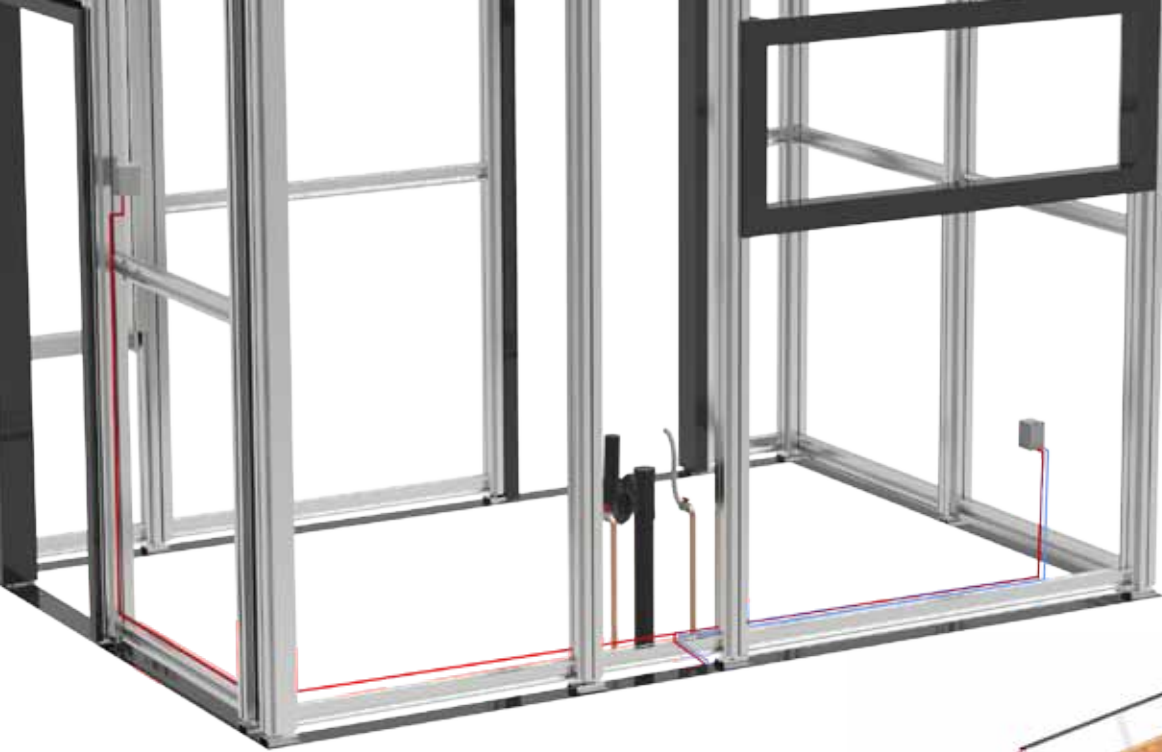
Important things to consider when planning your Consultation S-PACE

- Overall space available
- Free space all around
- Adequate or sufficient lighting
- Electrical and plumbing requirements
- Number of electrical devices needed
- Waiting room availability
- Type of consultation versus storage and furniture needs, etc.



Almost unlimited configurations

S-PACE modularity is phenomenal. Its ingenious and unique design make it so flexible it can be installed in various shapes and can adapt to any store layout.



How it works/ technical elements

S-PACE is a self-supporting aluminum structure covered with modular panels. Electrical wires, network cables and plumbing can be integrated within the walls and posts, giving the overall unit a clean, modern and wire free design.



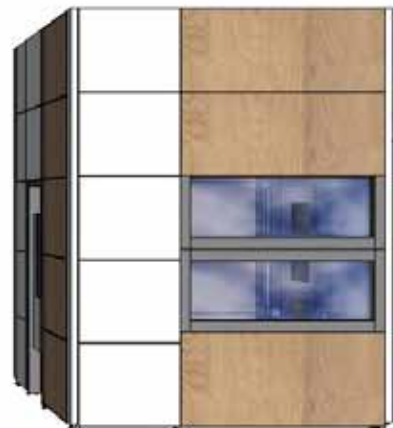
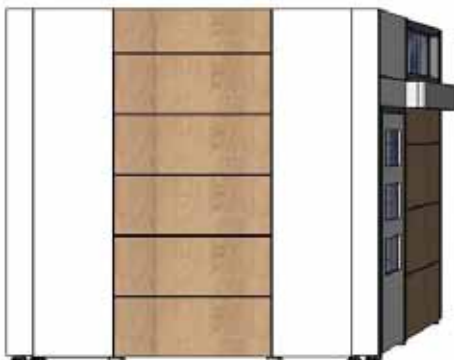
The prefabricated walls can be easily removed or relocated without affecting the existing building structure.

Variable heights are available

Based on multiple panel heights, there is almost no limit; we manufacture on demand in our own facilities.

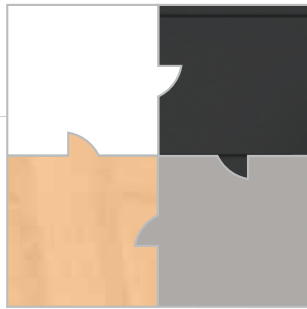
Various Standards heights :

- 8'
- 9'
- 10'
- 11'



3 Brand your **S-SPACE**

Vic Store has a wide range of colors, textures and other structural options to create a modern and customizable design. Make it look outstanding and functional by adding lighting and suspended ceilings. Illuminated or 3D logo signs may offer additional lighting to your **S-SPACE** as well.



Infinite colors and finishes
metal, flat or wood finish available.



Add recessed lighting, suspended ceiling and lighting for an outstanding design.

Consultation



Schedule and information

Posters and graphic signs

Graphics and medias

Easily integrate seamless and customized graphic design elements to the structure such as logos, schedule information or any branding elements.

With the **S-SPACE** technology, you can easily add screen and TV supports, and run electrical and network wires inside your walls for a professional and clean look.



Screen and interactive support



Doors and windows

Depending on your needs, you can find the perfect doors or windows. Maximize your space with steel framed sliding or swinging doors and control lighting and intimacy with our configurable clear and frosted glass.

Doors to meet or exceed standards

All of our models are made of solid and resistant materials and come with heavy duty commercial hardware.

Opening widths are made to accomodate wheelchair or oversized accessibility needs.

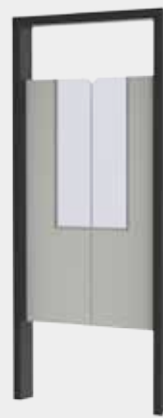
Securitiy locks are available for standards hinged doors.



Sliding door



Standard door



Swinging door



Retractable door



Clear or frosted glass



Multiple window configurations and sizes

Windows to insure privacy and adequate lighting

All of our window models are made of high quality security glass.

On demand, tempered glass is available for staff and patient security.

Any type of glass can accomodate graphics.

4 Begin consulting with your patients

Both the patients and pharmacists will benefit from this perfectly optimized and private environment. Professionals can give their clients the support they deserve in the customized space which allows you to include any equipment necessary for the offered services.

Complete your new **S-SPACE** with the storage and furniture you need to better help your patients. See our **S-SPACE** Furniture products.



Consultation desk



Paper and media organizer



Bottom file unit



Sink unit

And many more!



S-SPACE FURNITURE





Create a consultation **S-SPACE**

Change your business overnight

For over 60 years, Vic Stores Fixtures has designed, manufactured and distributed specialized modular commercial fixtures throughout North America.

By focusing on design, ergonomics and efficiency, we have been able to provide innovative products which improve the way people do business. **S-SPACE** and **RxZone2** systems are a result of our expertise in various materials and production techniques. Both are optimal solutions in today's pharmacy and medical clinic industries.



In a few hours, you can have a flexible and customized consultation environment ready.
No lost business hours, no dust and noisy disruption, simply beautiful and ergonomic **S-SPACE**.

Vicstore FIXTURES

1440, Notre-Dame Ouest
Victoriaville (Québec) G6P 7L7
Canada

T 819 758-0626
F 819 758-8256
Toll free 1 888 758-0626

info@vicstore.com

10 Kingsbridge Garden Circle, Suite 305
Mississauga ON., L5R 3K6
Canada

T 1 888 758-0626

www.vicstore.com

All products and their names shown in this publication are property of Vic Store Fixtures. No unauthorized copying is permitted.

© 2017 Vic Store Fixtures. All rights reserved.

Edition : March 2017