



VICSTORE

RXZONE LINE



**Tailored for Pharmacies, Highlighting
Ergonomics, Modularity, and Functionality.**

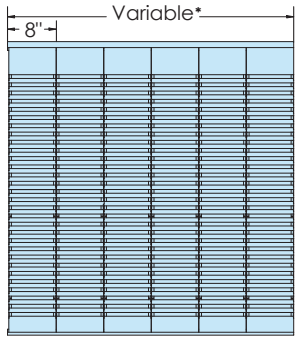
vicstore.com



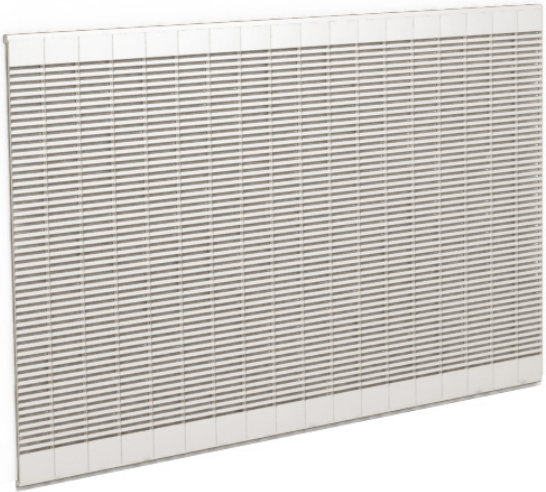
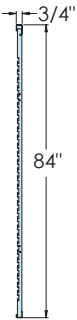
FEATURES

- The **RXWall** system is designed to store the various medicine bottles.
- It must be attached to the wall using slides.
- This system is preferred in restricted storage spaces.
- Fits **RXTray** and **Will-Call Hangers**.
- **RXWall** is sold in sections made of 8"L x 3/4"D x 84"H cutout steel stripes, including top and bottom brackets.

FRONT VIEW



PROFILE VIEW



DIMENSIONS			
CODES	*VARIABLE DIM.	CODES	*VARIABLE DIM.
RXW24	24"L x 84"H	RRXW40	40"L x 84"H
RXW32	32"L x 84"H	RXW48	48"L x 84"H

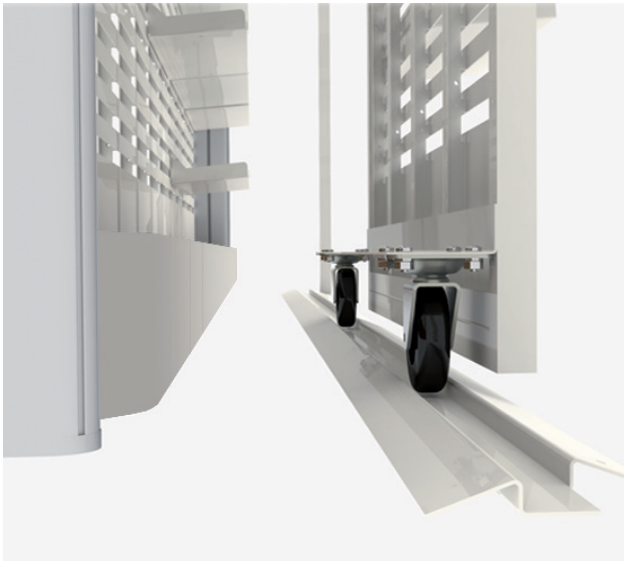
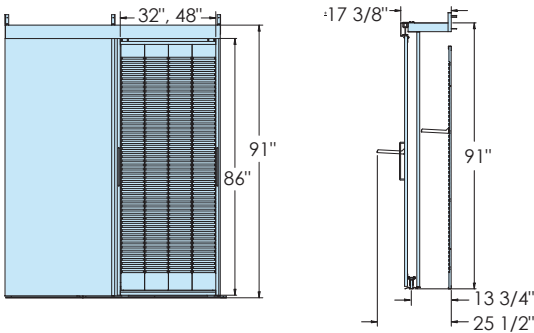


FEATURES

- The **RXWall** system is designed to store the various medicine bottles on steel trays in front.
- The rail panels can cover up to 50% of the wall storage space to increase storage capacity.
- This system is preferred in restricted storage spaces where large quantities of products need to be stored.
- Each section includes :
 - top and bottom rails
 - header and brackets
 - end stoppers
 - support leg and post

FRONT VIEW

PROFILE VIEW



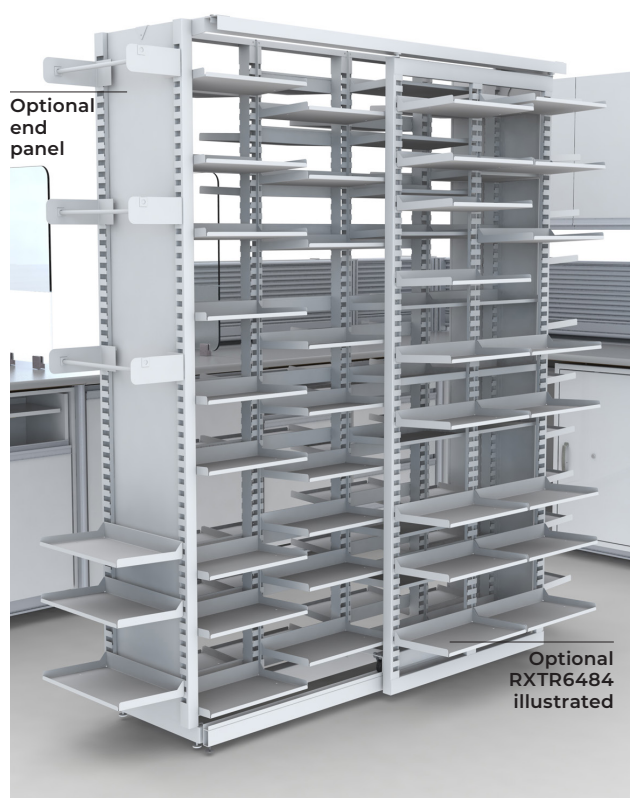
DIMENSIONS

The rail system and the headers are sold in sections of

CODES	DIM.	CODES	DIM.
RXR08	96"	RXR16	192"
RXR10	120"	RXR18	216"
RXR12	144"	RXR20	240"
RXR14	168"		

The sliding panels of the **RXRail** system are sold in sections of :

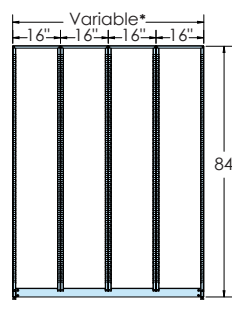
RXRFP32	32"	RXRFP48	48"
---------	-----	---------	-----



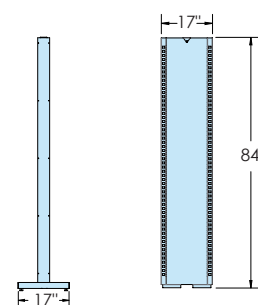
FEATURES

- The **RXTray** system renowned for its flexibility and quick installation.
- Equipped with a self-supporting structure, it can accommodate steel trays and **Will-Call Hangers**.
- Perfect for storing medicine bottles.
- Economical and versatile.
- Sliding panel (optional) **RXTR6484** 64"L x 84"H
- End panel (optional) **RXTEP8417** 17"L x 84"H

FRONT VIEW



PROFILE VIEW



DIMENSIONS

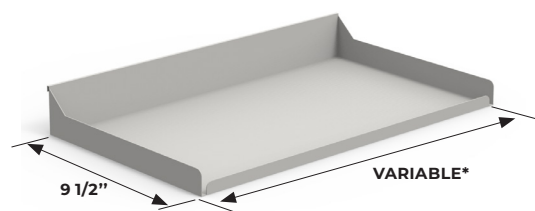
- For 16"L x 9"D Vic tray
- 17"L x 84"H base post
- In 16" to 64" long sections

CODES	*VARIABLE DIM.	CODES	*VARIABLE DIM.
RXT1684	16"L x 84"H	RXT4884	48"L x 84"H
RXT3284	32"L x 84"H	RXT6484	64"L x 84"H

STRAIGHT STEEL TRAY

FEATURES

- The straight tray is made of steel. It can be attached to the **RXClip** slatwall as well as the **RXWall**, **RXRail** and **RXTray** systems.
- It must be attached to the **RXClip** slatwall.



DIMENSIONS

CODES	* VARIABLE DIM.
RXPBT0816-02	16"L x 9 1/2"D
RXPBT0824-02	24"L x 9 1/2"D

SHELVING WILL-CALL HANGER

FEATURES

- The **Will-Call Hangers** consists of 2 brackets and a 3/8" steel rod.
- Must be installed on **VicGlobal** standard shelving.



DIMENSIONS

CODES	DIM.
626-22548	47 3/4"

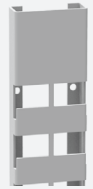
WALL POST FOR STEEL TRAYS

RXTCP__

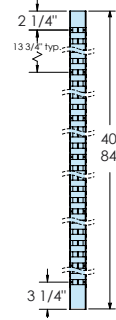


FEATURES

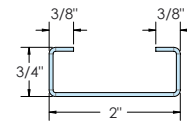
- It must be attached to the wall or to a partition wall using slides.
- This storage system is preferred in restricted storage spaces.
- Fits **RXTray** and **Will-Call Hangers**.
- Provide installation according trays (16" C/C or 24" C/C)



FRONT VIEW



TOP VIEW



DIMENSIONS

CODES	DIM.
RXTCP40-02	40"H
XTCP84-02	84"H

RXTRAY WILL-CALL HANGER

FEATURES

- The **Will-Call Hangers** is made of steel.
- It is designed to be used on the **RXTray** end panels, wall post, **RXClip** and **RXWall**.



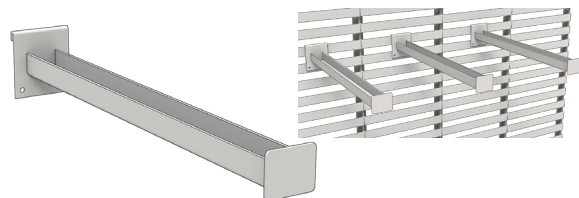
DIMENSIONS

CODES	DIM.
RXTBH16	16"L x 9 1/2"D

DISPILL HANGER

FEATURES

- 14" long steel hanger for dispill.
- It can be attached to **RXClip** and **RXWall**.



DIMENSIONS

CODES	DIM.
RXDS14	14"L

BAY STORAGE SYSTEM

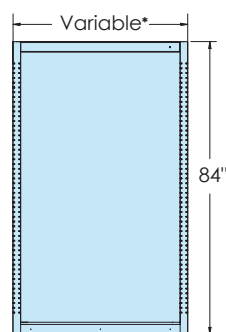
Z2PBU



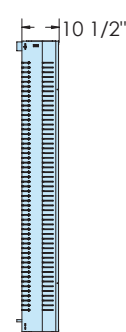
FEATURES

- The bay storage system is designed to store various medicine bottles on shelves.
- They can be placed side by side or back to back.
- It can support bay shelves, bay **Will-Call Hangers** and **Bay Dispill hangers** (p. 37). These accessories are not included.

FRONT VIEW



PROFILE VIEW



DIMENSIONS

FIRST SECTIONS	*VARIABLE DIM.	ADDITIONAL SECTIONS	*VARIABLE DIM.
20" section	22"	20" section	20"
24" section	26 1/8"	24" section	25 1/8"
32" section	34 1/8"	32" section	33 1/8"
40" section	42 1/8"	40" section	41 1/8"
48" section	50 1/8"	48" section	49 1/8"

BAY WILL-CALL HANGER

FEATURES

- The **Will-Call Hangers** consists of 2 brackets and a steel rod.
- It must be used in a storage bay only.
- The Monaco bags (#103)



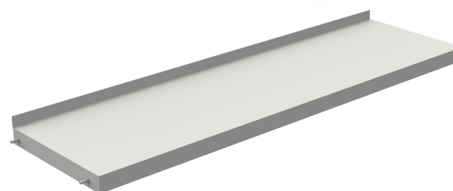
DIMENSIONS

CODES	DIM.	CODES	DIM.
PBWC24R	24"	PBWC40R	40"
PBWC32R	32"	PBWC48R	48"

REVERSIBLE BAY SHELF

FEATURES

- The bay shelf is made of steel.
- It must be used in a storage bay only.
- It is tiltable and reversible.



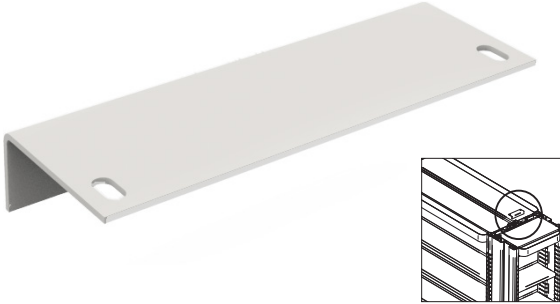
DIMENSIONS

CODES	DIM.	CODES	DIM.
PBRS920	20"L x 9"D	PBRS940	40"L x 9"D
PBRS924	24"L x 9"D	PBRS948	48"L x 9"D
PBRS932	32"L x 9"D		

BAY END SECTION ATTACHMENT

FEATURES

- The bay end section attachment must be used to attach a bay end section to 2 bays back to back.



DIMENSIONS

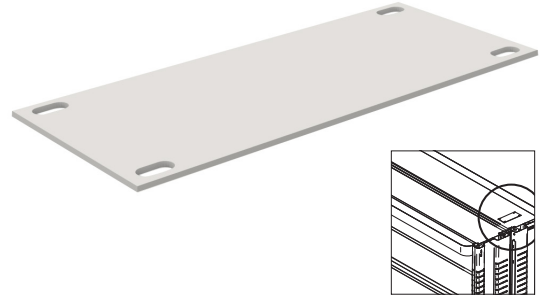
CODES

Z2PBEF

DOUBLE BAY JOINING PLATE

FEATURES

- The double bay joining plate must be used to attach 2 bays back to back.



DIMENSIONS

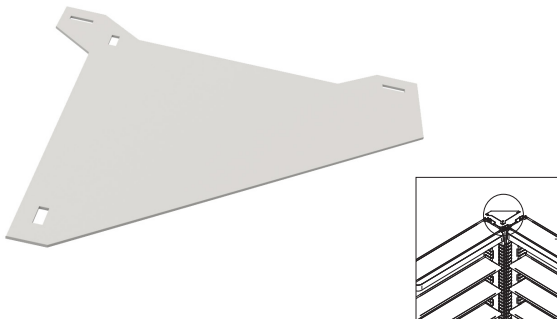
CODES

Z2PBSA

BAY CORNER ATTACHMENT

FEATURES

- The bay corner attachment must be used to attach 2 bays together at a 90° angle.



DIMENSIONS

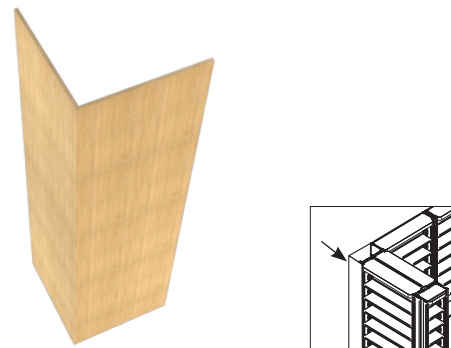
CODES

Z2PCF1212

BAY FILLING CORNER

FEATURES

- The bay filling corner must be used when the back of the bays is visible to the customers.
- Melamine construction.



DIMENSIONS

CODES

Z2PBCF1212

Z2PBCF1224

DIM.

12"L x 12"D x 84"H

12"L x 24"D x 84"H



VICSTORE

1440, NOTRE-DAME OUEST
VICTORIAVILLE (QUÉBEC)
G6P 7L7 CANADA

vicstore.com



Can. Patent No. : 2,446,451
US Patent No. : 7,343,864 B2

The present patents grant
VicStore Fixtures and its legal
representatives the exclusive
right, privilege and liberty of
making, constructing, using
the invention and selling it
to others to be used.

RXZone is a registered
trademark of **VicStore Fixtures**.

All products and their names
shown in this publication are
property of **VicStore Fixtures**.
No unauthorized copying is permitted.

© 2012 Vic Store Fixtures.
All rights reserved.

Edition : May 2024